



The Camfil ECO GlidePack is an inline housing that will remove mists, moisture, or oil or water base, from the airstream to protect downstream components from associated maladies. Each Camfil ECO GlidePack includes:

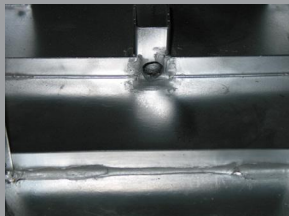
- 16-gauge galvanized steel construction. All components are weatherproof for interior or exterior installation.
- A short in-line depth of only 12" conserving valuable space for other HVAC system components.
- Pre-drilled standing flanges to mate to existing HVAC equipment.
- An integral filter track for application of various impingement type filters designed for oil/water/mist removal.
- Filter track drains to facilitate liquid collection and routing to housing drain.
- A housing drain to remove captured materials for reclamation or disposal.

Applications include:

- Removal of process oil from grinding/ process applications. The oil may be captured for return to the process increasing the economy of operation.
- Removal of humidification mists to prevent water collection on downstream filters and HVAC components.
- Removal of water mists associated with high velocity outdoor air intakes.

When combined with the Camfil ECO® Moisture Separator removal efficiency of droplets over 20-micron in size is 98%.

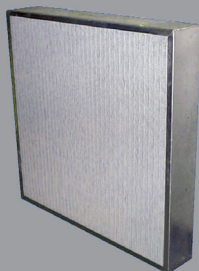
Single-stage filter housing for oil and water mist removal.



Post drain



Fluid collection drain (threaded NPT)



Camfil ECO® Moisture Separator for water oil or mist removal, order separately.

Performance

Number of Filters High	Height	Number of Filters Wide											
		½	1	1½	2	2½	3	3½	4	4½	5	5½	6
½	1'-3¼"	—	1000	—	2000	—	3000	—	4000	—	5000	—	6000
1	2'-3¼"	1000	2000	3000	4000	5000	6000	7000	8000	9000	10000	11000	12000
1½	3'-3½"	—	3000	—	6000	—	9000	—	12000	—	15000	—	18000
2	4'-3½"	2000	4000	6000	8000	10000	12000	14000	16000	18000	20000	22000	24000
2½	5'-3¾"	—	5000	—	10000	—	15000	—	20000	—	25000	—	30000
3	6'-3¾"	—	6000	9000	12000	15000	18000	21000	24000	27000	30000	33000	36000
3½	7'-4"	—	7000	—	14000	—	21000	—	28000	—	35000	—	42000
4	8'-4"	—	8000	12000	16000	20000	24000	28000	32000	36000	40000	44000	48000
Width		1'-0"	2'-0"	3'-0"	4'-0"	5'-0"	6'-0"	7'-0"	8'-0"	9'-0"	10'-0"	11'-0"	12'-0"

DATA NOTES:
 Airflow must be maintained between 450 and 550 fpm.
 For ECO® Moisture Separator filter see Bulletin 2003-0302
 Standard housing operational to ± 6.0" w.g.
 Contact your Camfil representative for shipping and installed housing weight.

Available Options:
 Stainless steel construction
 High-pressure construction (to 8.0" w.g.)
 Double-wall with insulation
 Transitions to standard HVAC equipment.
 Contact factory for more information.

Camfil ECO GlidePack Housing Specification

1.0 General

1.1 - Filter housing shall be single-stage filter system consisting of 16-gauge galvanized steel enclosure, galvanized filter mounting track, dual-access doors, and drains to remove captured liquid contaminants. In-line housing depth shall not exceed 12".

1.2 - Sizes shall be as noted on enclosed drawings or other supporting materials.

2.0 Construction

2.1 - The housing shall be constructed of 16-gauge galvanized steel with pre-drilled standing flanges to facilitate attachment to other system components. Corner posts of Z-channel construction shall ensure dimensional adherence. The housing shall be weatherproof and suitable for rooftop/outdoor installation.

2.2 - A 4" deep galvanized filter mounting track shall be an integral component of housing construction. The mounting track shall be sealed and include 1" filter support flanges on the air entering and air exiting sides.

2.3 - Dual access doors, swing-open type, shall include high-memory sponge neoprene gasket to facilitate a door-to-filter seal. Each door shall be equipped with adjustable and replaceable positive sealing UV resistant star-style knobs and replaceable door hinges.

2.4 - Tracks shall be equipped with 0.75" holes and support/drain columns to facilitate liquid runoff. Columns shall be welded to the filter tracks to assist in housing support and effect a permanent seal.

2.5 - A drain connection, at each column post, shall be threaded 1/2" NPT.

3.0 Performance

3.1 - When applied with a Camfil ECO Moisture Separator, the system shall be capable of a removal efficiency of 98% on droplets 20-micron in size.

3.2 - Manufacturer shall provide evidence of facility certification to ISO 9001:2008.

